

»» Passion  
for **Precision** ««



**MEDENTIKA**

**PROSTHETIC  
SOLUTIONS**

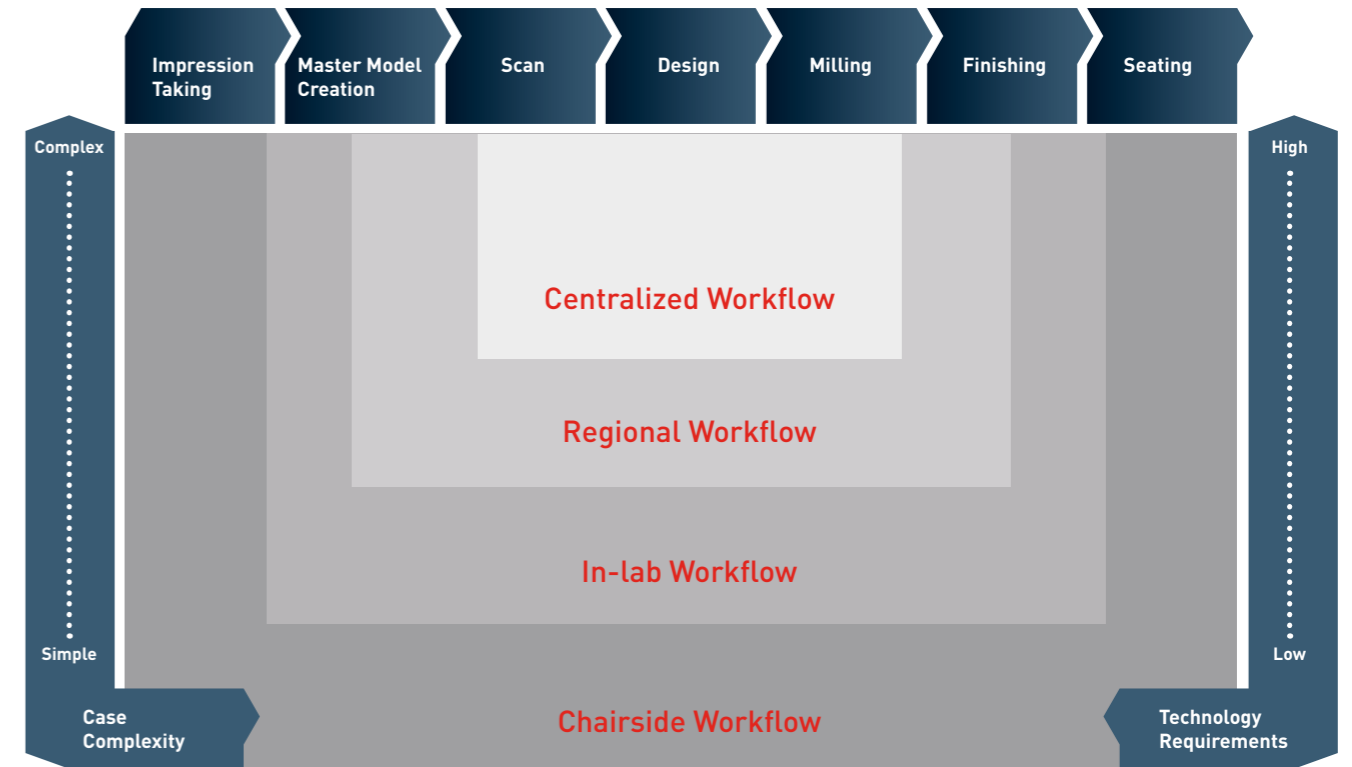
 **MEDENTIKA®**

» Precision, innovation,  
and compatibility  
for all major systems «



» Set yourself **free** «

Labs today have to support very different workflows of customers. Whether you use the traditional or digital workflow, Medentika understands that freedom of choice, quality and profit are key to your success.



**This is where Medentika was born.**

Medentika's home is in Baden-Wuerttemberg, Germany, an area renowned for fine mechanics and precision engineering. Medentika's success story began in the technically demanding German market. Our passion to provide high-quality engineered abutments is sincere, and our new implant line shows that our success continues to grow globally.

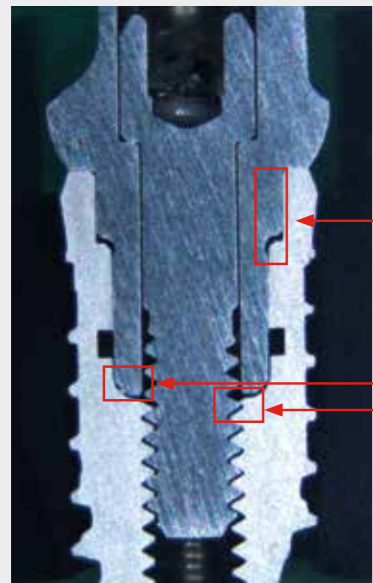
**Let's experience the Medentika passion together.**

- Designed for an optimized fit
- Innovative compatibility with simplicity
- Wide prosthetic product range
- 30 year limited warranty and customer services
- Affordable

**It's time to have it your way!**

# » Designed for an optimized fit «

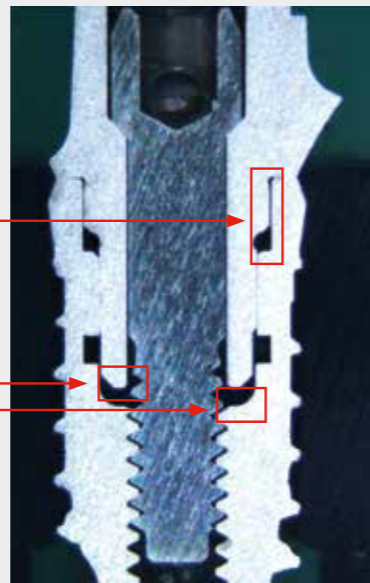
The pictures speak for themselves.



less micro gap means less micro movement

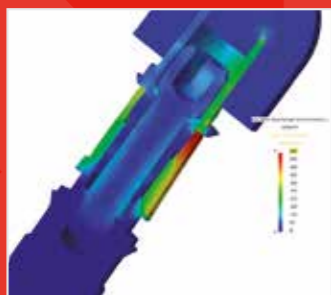
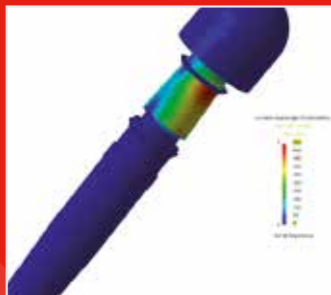
less micro gap and deeper engagement/insertion into implant to enhance implant/abutment stability and reduce micro movement

Section cut of Medentika T-Series abutment

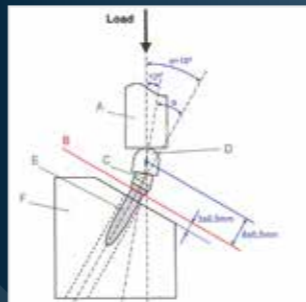


Section cut of Dentsply Implants Xive S abutment

FINITE ELEMENT ANALYSIS<sup>1</sup> ACCORDING TO DIN EN ISO 14801

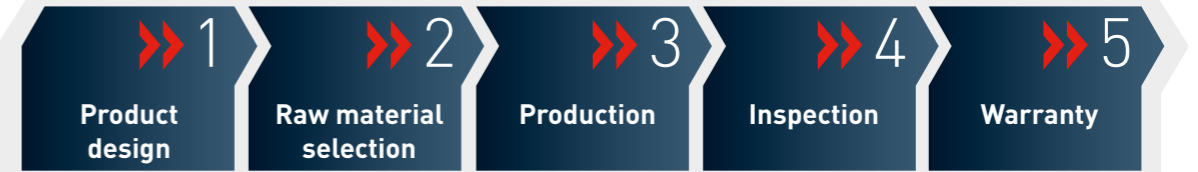


MECHANICAL PERMANENT LOAD TEST<sup>2</sup> AT 5 MILLION LOAD CYCLES WITH 250 NEWTONS



<sup>1</sup> by: UNIKE Design & Development GmbH in Trier  
<sup>2</sup> by: Professor for Mechanical Engineering, Professor, Department of Endodontics, Prosthodontics and operative Dentistry, Dental School, Dr. Dwayne D. Arola, University of Maryland of Baltimore County, 1000 Hilltop Circle, Baltimore (USA)

From dental technicians for dental technicians.



Developed by dental technicians, Medentika products offer great precision, compatibility, durability and consistency.

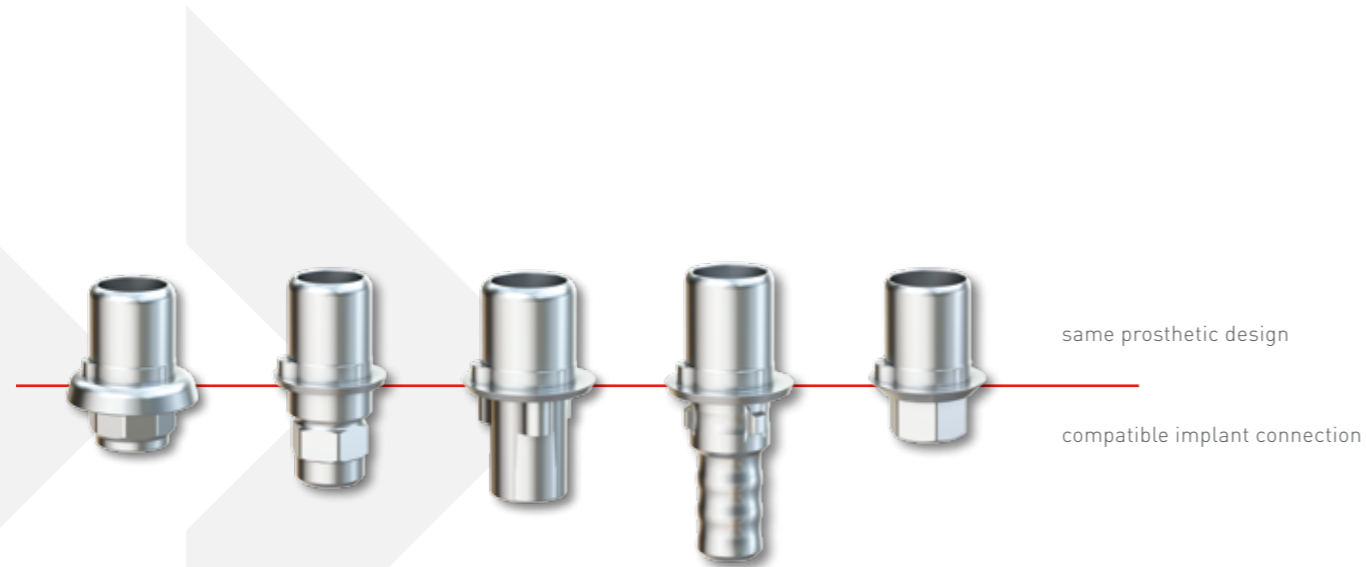
## Peace of mind

- 1 **We are committed to providing components that are optimized or at least equal to the original components.**
- 2 **High-quality German manufacturing:** All titanium and stainless steel components are exclusively produced in Germany. All materials also pass the ISO 14801 fatigue test to assure the reliability.
- 3 **Certified production process:** From the shape of the cutting tool to parameter settings, cutting speed and feed rate – Medentika has in-house experts who have mastered the parameter settings to each individual component with quality management certified by DIN EN ISO 13485.
- 4 **Rigid inspection:** Medentika follows rigid quality assurance complying with EU Directive 93/42/EEC.
- 5 **Our commitment to quality is proven by our 30 year limited warranty<sup>3</sup>.**



<sup>3</sup> See our terms and conditions.

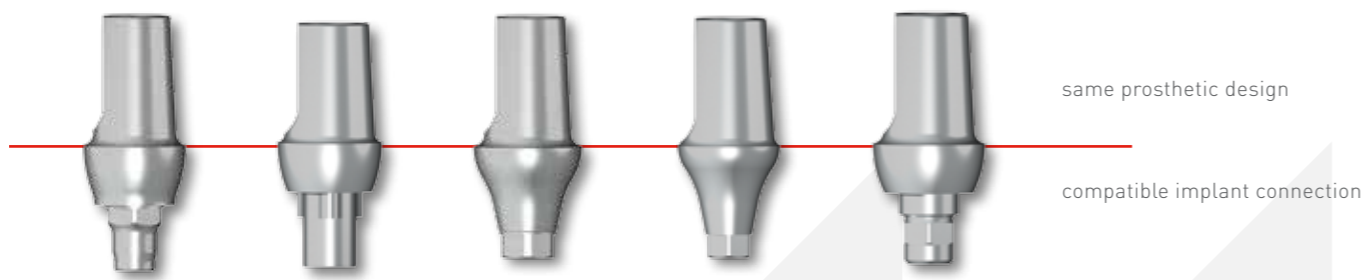
# » Innovative compatibility with simplicity «



One for all

**Medentika is passionate about helping to make your workflow more streamlined.**

We offer the standardized prosthetic workflow for different implant platforms to help you finalize the restoration faster. You can meet the demands of your customers efficiently.



**One provider to meet all your needs.**

Medentika's comprehensive restorative range offers you a one-stop-shop solution at affordable prices.

**PRODUCT INDEX**

IMPLANT PICK-UP OPEN IMPRESSION		MEDENTIBASE® ABUTMENTS	
PLANNING ABUTMENTS		MEDENTIBASE® PLASTIC CAP	
LABORATORY ANALOGS		MEDENTIBASE® IMPLANT PICKUP	
ABUTMENT SCREWS		PREFACE TITANIUM ABUTMENT	
LABORATORY SCREWS		TITANIUM BASE ABUTMENT	
TEMPORARY ABUTMENTS ENGAGING		SCANBODY GEN. 2	
TEMPORARY ABUTMENTS NON-ENGAGING		ALTUS™ GINGIVA HEIGHT MEASURING TOOL	
STANDARD ABUTMENTS STRAIGHT		NOVALOC® PROCESSING PACK TITANIUM OR PEEK (2 PACK)	
STANDARD ABUTMENTS ANGLED		MEDENTILOC® ABUTMENTS STRAIGHT	
MASSIVE (SOLID) ABUTMENTS STRAIGHT		MEDENTILOC® ABUTMENTS 15° ANGLED	
MASSIVE (SOLID) ABUTMENTS ANGLED		NOVALOC® TOOLS	
CASTABLE GOLD ABUTMENTS ENGAGING		TORQUE RATCHET	
CASTABLE GOLD ABUTMENTS NON-ENGAGING		INSERTS FOR LABORATORY SCREW DRIVER AND RATCHET	

# >> Wide prosthetic product range <<

Our innovative products are created with a passion for precision, exciting design and manufacture. Standards are the very best in German engineering.



## Multi Platform Systems

Precision, innovation and compatibility for all major implant systems

<b>BioHorizons®</b>	Tapered Internal Tapered Internal Plus Tapered Tissue Level	<b>MIS®</b> <b>Nobel Biocare®</b>	SEVEN® Internal Hex NobelReplace® Tapered NobelActive®
<b>BIOMET 3i®</b>	Certain® External Hex	<b>Straumann®</b> <b>Zimmer Dental®</b>	NobelReplace® Conical Brånemark® Tissue Level® Tapered Screw-Vent®
<b>Dentsply® Implants</b>	ASTRA TECH OsseoSpeed® TX XiVE® S ANKYLOS®		

All prosthetic indications are covered from single tooth and multiple teeth to removable and fixed edentulous solutions, from straightforward to complex cases.

	Single-tooth loss	Multi-teeth loss	Edentulous
<b>Complex</b>	Yes	Yes	Yes
<b>Advanced</b>	Yes	Yes	Yes
<b>Straight-forward</b>	Yes	Yes	Yes

Products <sup>4,5</sup> available from the traditional to fully digital workflow:

**Traditional Workflow**

		
Standard abutment	Massive (Solid) abutment	Gold castable abutment

**Digital Workflow / MedentiCAD**

Customized prosthetics

 <span style="color: red; font-size: small;">Coming soon</span>	 <span style="color: red; font-size: small;">Coming soon</span>	 <span style="color: red; font-size: small;">Coming soon</span>
Abutments	Bridges and bars	MedentiCAD Crown

Components for digital construction of customized prosthetics

		
Titanium Base	MedentiBASE	Laboratory implant CADCAM

Milling abutment blanks

	
PreFace® Abutment Holder	PreFace® Abutments

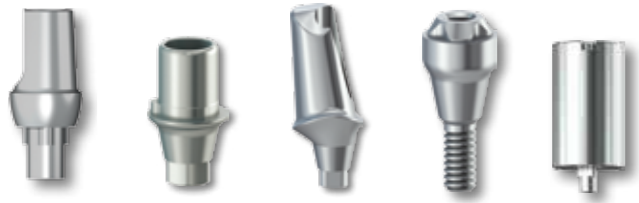
**Production flexibility:**

Your freedom of choice to send the CAD file to your qualified preferred milling partner

<sup>4</sup> Product samples.  
<sup>5</sup> Not all products are available in all countries. Please contact your sales representative for further details.

## »» 30 year limited warranty and customer services ««

You are in safe hands



All Medentika and MedentiCAD abutment lines

### 30 year limited warranty<sup>6,7</sup> for Medentika products

Material: titanium  
Product:  
abutment lines including abut-  
ment screw, manufactured and  
supplied by Medentika

This limited warranty is valid for as long as the stated warranty of the respective implant company, but for a maximum of 30 years from delivery. This warranty cannot be connected with any other warranty and is not a prolongation to any existing warranty.

Implants

### 30 year limited warranty for Medentika products in combination with implants of other companies

Condition: Medentika will cover the replacement cost of a failed implant if the manufacturer denies the implant warranty due to the use of a Medentika component. See our terms and conditions for further information.<sup>6</sup>

Our highly trained technical support team are available to offer help and advice, at no cost, to both technicians and clinicians . Wherever you are based globally, please do not hesitate to contact us.



## »» A global leader at your service ««

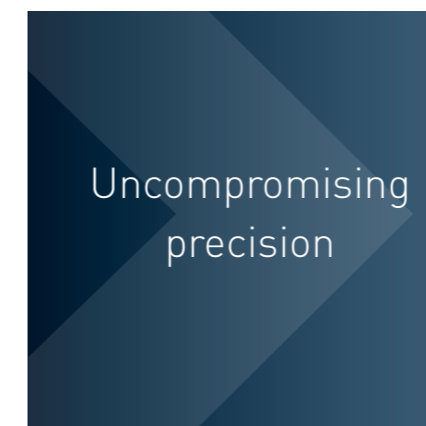
Lab first

You, the customer, are the heart of our business. We recognize your high demand. Medentika's team is passionate about innovation, implantology, engineering, manufacturing & customer service.

Medentika is here for you offering products that are

- Precise
- Innovative
- Compatible
- Affordable

Just as importantly, we know that if we are to have long-standing relationships with you, we must treat you fairly, equally and transparently – this is our guarantee to you.



Become part of the Medentika family and one of more than 10'000 laboratories using our products worldwide

visit us at [www.medentika.com](http://www.medentika.com)



IMPRINT

Editor :  
Medentika GmbH Hammweg 8-10 DE-76549 Hügelsheim +49 (0)7229 69912-0 +49 (0)7229 69912-20 [www.medentika.de](http://www.medentika.de)

Design by:  
Der WeberFink GbR Graphic Design Studio [www.weberfink.de](http://www.weberfink.de)

As at: February 2016

<sup>6</sup> Immediate restorations are excluded from the limited warranty. Novaloc® and Optiloc® abutments are under 10 year warranty.  
<sup>7</sup> See our terms and conditions.

Medentika is  
distributed by:

Instradent USA, Inc.  
60 Minuteman Road  
Andover, MA 01810

Phone: 855-412-8883  
Fax: 885-412-8884

[info.us@instradent.com](mailto:info.us@instradent.com)  
[www.instradent.us](http://www.instradent.us)

»» Passion for  
**Precision** ««

